

BHARATI VIDYAPEETH (DEEMED TO BE) UNIVERSITY
MEDICAL COLLEGE, PUNE
BHARATI HOSPITAL & RESEARCH CENTRE, PUNE
DEPARTMENT OF RADIO DIAGNOSIS AND
IMAGING

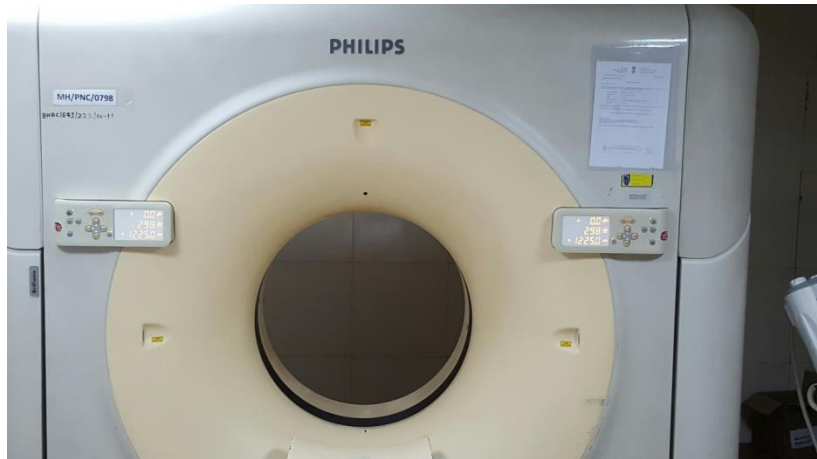


Facilities and Equipment:

The Department of Radio Diagnosis and Imaging of Bharati Medical College and Hospital is a state of the art facility. It was founded in the year 1991.

It has following equipments:

**1.5 Tesla Philips
AchievaMRI
Special Investigations
Include:
MR Spectroscopy
Fetal MRI
MRCP
Diffuse Tensor
Imaging
Cartilage Mapping**



16 SLICE PHILIPS BRILLIANCE CT SCAN

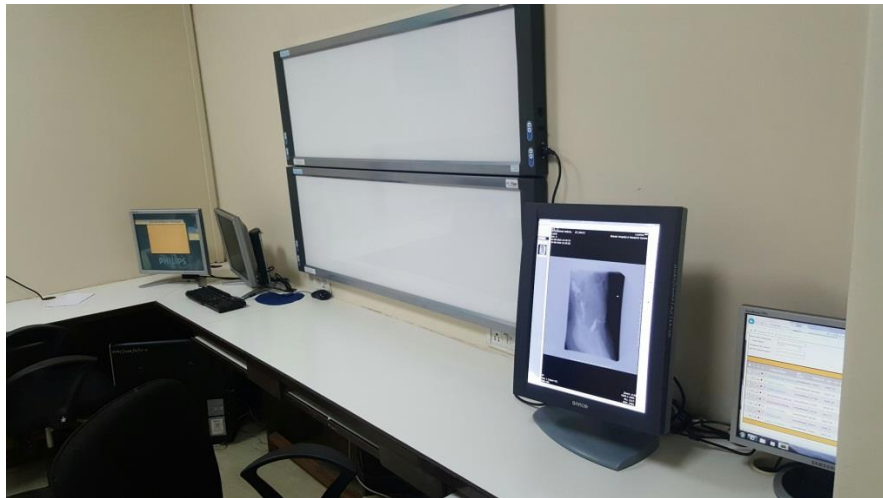
Special Investigations

Offered:

- 1. CT Angiography
(Brain, Pulmonary,
Abdominal,
Peripheral)**
- 2. CT Cisternography.**
- 3. CT Guided Biopsy.**
- 4. 3D Reconstruction of
CT images.**



CT and MRI Console Room with workstations:



**TWO DIGITAL
FLUOROSCOPY SUITES**
with top of the line
Flexavision Shimadzu:



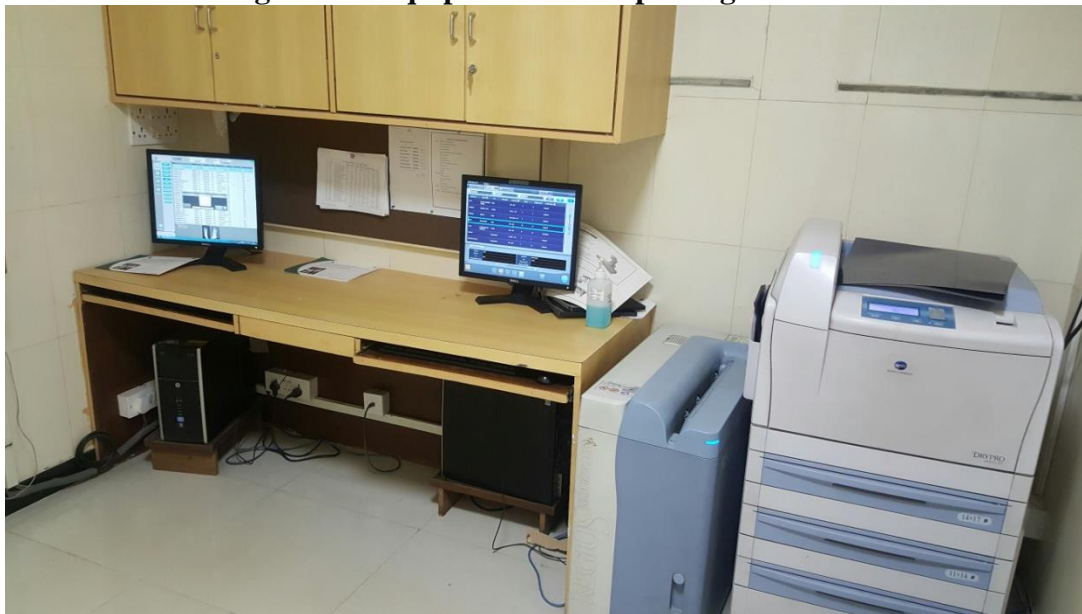
**BET Medicals DIGITAL
Mammography equipment:**



4 Radiography Suites are available in the department with top of the line Konica Minolta Aero Digital Radiography (DR) X-70. Along with in house portable X-ray units available in ICU and HDU.



Konica Minolta Digital CR Equipment and Reporting Stations:



Eight USG Suites including top of the line GE Voluson E6, Philips IU -22 and Philips Affinity 70 Equipment. In addition there are in house Sonography units in ICU, HDU and Labour Room.

Philips AFFINITY – 70



GE Voluson E6



Philips IU-22



Special Features Include:

- 1. 3D, 4D and Doppler Imaging.**
- 2. Elastography.**
- 3. USG Guided Bopsies.**

The department has work load of around 125 diagnostic X – rays, 100 Ultrasounds, 15 CT scans, 15 MRI scans, 5 Mammography studies, 1 DSA, 5 CT/USG Guided FNACs and 10color Doppler per day.

The department caters to in house patients and out door patients referred from the OPDs & doctors from near by localities and surrounding villages.

Radiology Investigations

Sr. No	Radiology
1	Any X-ray on Portable Machine
2	Abdomen AP/Lat (Erect) Each view
3	Both Knees / Ankles/Hands / Wrist/Feet
4	Both Knees AP/Lateral only
5	Calcaneum AP/Lat / Axial
6	Cervical Spine AP/Lat
7	Cervical spine both oblique views
8	Cervical spine lateral view in Flexion and extension
9	Chest AP/Lat/PA
10	Clavicle AP
11	Elbow AP/Lat
12	Fluoroscopy
13	Foot with Ankle AP/Lat/oblique
14	Foot with Ankle AP/Lat
15	Forearm with Elbow AP/Lat
16	Forearm with Wrist AP/Lat
17	Hand AP/Lat
18	Hand AP/Lat/oblique
19	Hand with Wrist AP/Lat
20	Hand with Wrist AP/Lat/oblique
21	Hip AP/Lat
22	Arm (humerus) AP/Lat
23	Arm (humerus) with Elbow AP/Lat
24	Knee AP/Lat
25	Knee with Thigh (Femur) AP/Lat
26	Leg (Tibia/Fibula) AP/Lat
27	Leg with Ankle AP/Lat
28	Leg with Knee AP/Lat
29	Lumbo Sacral Spine AP/Lat
30	Lumbosacral spine Both oblique views
31	Lumbosacral spine lateral view in Flexion and extension
32	Mandible AP/Lat
33	Mastoid bilateral
34	Nasal Bone AP/Lat
35	Orbit AP/Lat (Film 8 X 10)
36	PBH- Pelvis with Both hips
37	Shoulder AP/Lat
38	Skull AP/Lat or other views
39	Skyline View (Knee)
40	Thoraco Lumbar Spine
41	Xray Sacrum/Sacro– iliac joints Prone

B) Radiology Procedure

Sr. No.	Radiology
1	All Barium Procedure
2	Fistulogram
3	HSG
4	I.V.P
5	Mammography
6	MCU(Pediatric)
7	MCU + RGU(Adult)
8	RGU
9	Sinogram

C) Radiology Doppler Studies (Screening)

Sr. No.	Radiology
1	Abdomen Doppler
2	B/L Arterial + Venous
3	B/L Limb Arterial / Venous
4	Carotid Doppler
5	Cheek Doppler
6	Follow up Obs. Doppler (Within a week)
7	Obstetric Doppler
8	Penile Doppler
9	Renal Doppler
10	Scrotal Doppler
11	Single Limb Arterial / Venous
12	Single Limb Arterial + Venous

D) Ultrasonography- USG

Sr. No.	Particulars
a.	Abdomen
b.	Abdomen + pelvis
c.	AF (Brain)
d.	Anomaly Scan
e.	Breast
f.	B-Scan(Eye/Orbit)
g.	Cheek/Parotid
h.	Chest
i.	Early pregnancy
j.	Follicle monitoring/Ovulation
k.	Inguinal Region
l.	Joint – Knee/hip/ankle/shoulder/elbow/wrist
m.	KUB
n.	Spine
o.	Neck/ thyroid
p.	Obstetric
q.	Portable USG
r.	Pelvis
s.	Scrotum
t.	Soft Tissue
u.	Sub mandibular Region
v.	MSK-Thigh/Heel
w.	USG Guided biopsy with needle (incl.prostrate)
x.	USG Review
y.	Liver Elastography
z.	USG guided FNAC
a1.	USG guided pigtail drainage
a2.	USG guided ascitic/pleural fluid Paracentesis
a3.	Renal Biopsy Guidance(without needle)
a4.	Ultrasound guided compression for pseudoaneurysm

Sr.No.	Particular
1.	PCN (Percutaneous nephrostomy)
2	PTBD(percutaneous transhepatic biliary drainage)
3	Fallopian tube recanalization

E) MRI

Sr. No.	Radiology
1	Abdomen Whole
3	Ankle Joint
4	Arm
5	Both Hips
6	Both Knees
7	Both Shoulders
8	Brain
9	Brain Venography
10	Brain with Angiography
11	Breast Plain B/L
12	Cervical Spine
13	Contrast Breast B/L
14	Thoracic/ Lumbar Spine
15	Fetal
16	Foot
17	Hand with Wrist
18	Joint (Both)
19	Joints / Extremities
20	Knee
21	Lumbosacral Spine
22	Mandible
23	MRCP
24	MR Enterography
25	MRI Plate/Film
26	Orbit
27	Pelvis
29	S I Joints
30	Screening limited (Any)
31	Shoulder
35	Thorax
36	Urography
38	Wrist

F) CT Scan

Sr. No.	Radiology
1	Abdomen Plain
2	Abdomen/Chest/Pelvis/neck/Orbit/PNS/Temporal Bone/Joint/Urography
3	Angiography Abdomen
4	Angiography Peripheral Extremities/Carotid/Circle of wills
5	Both TM Joints
6	CT Brain with Cervical Spine (RTA PATIENT)
7	Brain Plain
8	Calcaneum
9	Cervical Spine
10	Chest
11	Cisternography
12	Elbow Joint
13	Foot
14	Guided Biopsy (Inclusive of Needle)
15	Guided FNAC (Inclusive of Needle)
16	Hip
17	Limited Scan
18	Lumbosacral Spine
19	Mandible
20	Maxilla
21	Myelo Cervical Spine
22	Myelo Lumbar Spine
23	Myelo Thoracic Spine

F) CT Scan

Sr. No.	Radiology
24	Neck/Larynx
25	Pelvis
26	PNS
27	Pulmonary Angiography (contrast extra)
28	Renal Angiography (contrast extra)
29	Scanogram
30	S I Joint
31	Shoulder
32	Temporal Bones
33	Thorax
34	Upper Abdomen
35	Urography
36	Whole Spine

Radiology Equipments

Sr. No	Equipment	Specification
1.	MRI	Philips 1.5 Tesla Achieva
2.	CT (16 Slice)	Philips Brilliance 16 Multi slice scanner
3.	Digital Fluoroscopy	1000 mA Image intensifier with Digital Fluoroscopy SHIMADZU FLEXAVISION with DSA
4.	Digital Radiography	800 mA Static radiography machine (Konica Aero Digital Radiography System).
5.	Mammography	METAL TRONICA
6.	Static Radiography Machines	a) 500 mA Meditronics static Radiography system. b) 500 mA Wipro GE static Radiography machine c) 500 mA SHIMADZU static Radiography machine
7.	Image intensifier	800 mA Siemens machine with IITV
8.	Ultrasonography Equipment & Color Doppler – (3 +1 in gynae	a) Philips iU - 22 Gray Scale, Doppler, 3D, 4D, Elastography. b) Affinity – 70 Gray Scale, Doppler, 3D, 4D, Elastography. c) GE Voluson E 6 - Gray Scale, Doppler, 3D, 4D d) Affinity – 50 Gray Scale, Colour Doppler. e) Affinity – 30 Gray Scale, Doppler. f) Philips HD – 11 Gray Scale, Doppler. g) Siemens Acuson Antares 5.0 - Gray Scale, Doppler. h) Siemens ADARA – Gray Scale i) Siemens ACUSON 300 - Gray Scale, Doppler j) Sonosite M Turbo - Gray Scale, Doppler k) Philips HD-5 - Gray Scale, Doppler l) Philips HD 7 – (2 in number) Gray Scale, Doppler m) GE VIVID – Gray Scale, Doppler n) Philips Innosight – (2 in number) Gray Scale, Doppler
9.	Mobile X-ray Unit	a) GE Genius 60 mA - 1

		b) 125 KV 200 mA Shimadzu -2 c) 100 kV 70 mA Philips DIAGNOX – 2 d) 100 kV 70 mA Meditronics - 2 e) 100 kV 70 mA MEDX Technology -1 f) 100 kV 70 mA STAR Medical System – 2
10.	C-ARM	a) Meditronics 60 HFX, Medico - 2 b) Philips 60 DFX C-Arm - 2 c) 60 DHF Philips image intensifier system Surgico - 2
11.	PACS	Mediff
12.	Cath Lab	Alleura XPER-FD 10C Philips