

# **Department of Anatomy**

# DEPARTMENT OF ANATOMY



# Museum



# Dissection Hall



# Histology Practical Hall

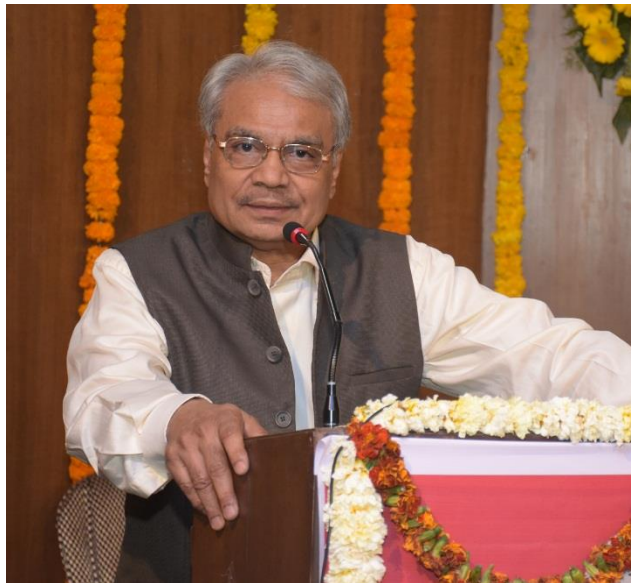




# RESCON 2018

Health of Doctors: need of the hour

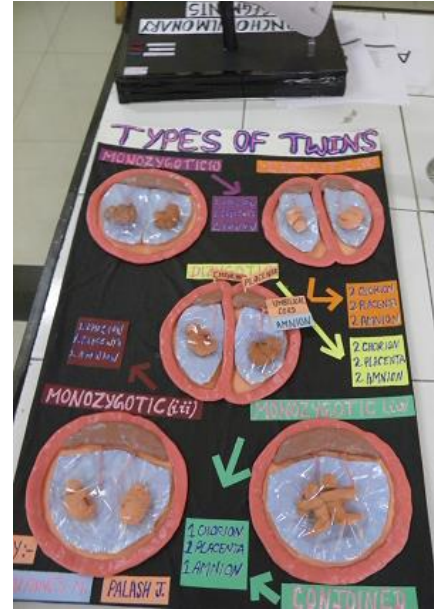
Organized by Department of Anatomy



# Model preparation (UG)- 2018



# Model preparation (UG)- 2017





Dr. Shilpa NATCON 2015



Dr. Medha Puranik Transcon 2016



Dr. Shilpa NATCON 2016





# UG SEMINAR – Vessels of Thorax

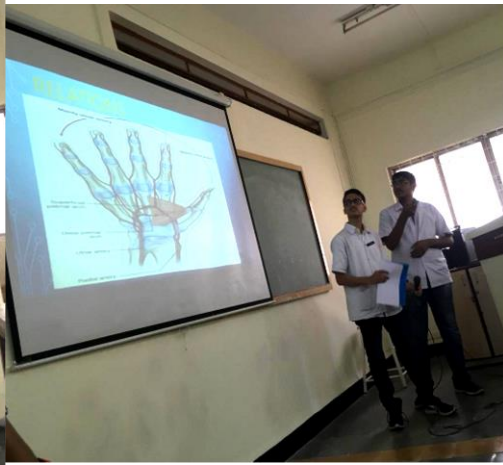
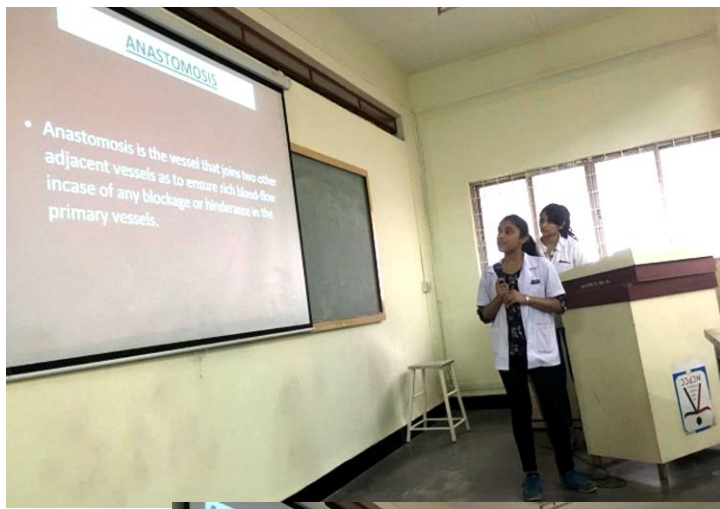
6<sup>th</sup> Jan 2017



# UG SEMINAR – Uterus

23<sup>rd</sup> Feb 2017





# UG Seminar

## Vessels of Upper limb

27<sup>th</sup> September 2018



# Research publications

Sr. No.	Title of Paper	Author(s)	Journal	Year	Volume
		2015-2016			
1	Gastrocnemius tubercle in Indian population: a new anatomical entity?	Shilpa Gosavi, Rajendra Garud, Surekha Jadhav	Rev Arg de AnatClin.	2015	7(2): 107-111
2	Estimation of height from length of ulna and length of fibula in Indian and Iraqi population	Aseel Abdul sattar Hussein Al-wasfi, Medha Puranik	Int. J of information research and review	2015	2(7): 904-908
3	Study of third coronary artery in adult human cadaveric hearts	Manisha Dhobale, Medha Puranik, Nitin Mudiraj, Uttama Joshi	J of clinical and diagnostic research	2015	9(10) AC01-AC04
4	Morphology of Acromion process: a study in Indian scapulae	Shilpa Gosavi, Surekha Jadhav, Rajendra Garud	Int. J of pharma research and Health sciences	2015	3(5): 831-835
5	Revision module in Anatomy by using power point slides	Medha Puranik	J of research in medical education and ethics	2015	5(3): 243-247
6	Various sacral indices: role in study of sexual dimorphism	Uttama Joshi, Medha Puranik,	Int. J of research in medical sciences	2016	4(3): 841-846
7	Spleen morphology with clinical significance – A legacy from the past	Vidya Kharat, Rajendra Garud,	IOSR journal of Dental and Medical sciences	2016	5(4): 39-42

Sr. No.	Title of Paper	Author(s)	Journal	Year	Volume
		2016-2017			
8	Caudate lobe	Shilpa Gosavi, Surekha Jadhav, Rajendra Garud	IOSR journal of Dental and Medical sciences	2016	15(8):83-86
9	Structured Evaluation Tool (SET): For Evaluation of Presentation of Postgraduate Students in Anatomy: Key to Faculty Development	M.G. Puranik and R.S. Garud	Journal of Research in Medical Education & Ethics	November, 2016,	Vol. 6, No. 3:
10	An anatomical study of coraco-acromial falx in Indian population	Surekha D. Jadhav, Shilpa N. Gosavi, Balbhim R Zambare <sup>3</sup>	Indian Journal of Clinical Anatomy and Physiology,	Jan-March, 2017	4(1):104-105
11	A Cadaveric Study of Portal Vein Termination and Its Surgical Relevance	Shilpa N. Gosavi, Surekha D. Jadhav, Rajendra S. Garud	Journal of Krishna Institute of Medical Sciences University	April-June 2017	Vol. 6, No. 2:69-73
		2017-18			
12	An examination of relationship between estimation of arm length with different parameters	Dr. Aparna M.Joshi, Dr.M.G.Puranik Dr.R.S.Garud	Indian journal of applied research	February-2018	Volume-8 issue-2:49-50
13	An examination of relationship between estimation of forearm length from different parameters	Dr. Aparna M.Joshi, Dr.M.G.Puranik,Dr.R.S.Garud	International journal of scientific research	April-2018	Volume-7 Issue-4:65-66
14	Mandibular and Mental foramen-A morphometric study in western Maharashtra	Anand Reddy, Rakhi Milind More, Rajendra S.Garud	Indian Journal of Clinical Anatomy and Physiology	July-2018	Volume -5 Issue-3:366-372
15	Morphological variations of the coraco-acromial Ligament: a cadaveric study	Surekha D. Jadhav, Shilpa N. Gosavi	Int J Anat Res	July 2018	Vol 6(3.3):5621-24. ISSN 2321-4287

# Department of Anatomy

Department of Anatomy, established in 1989 has grown enormously in both its infrastructural facilities and the academic and social outreach activities.

- It is a M.C.I. recognized postgraduate ( M.D.) department where 18 students have completed post graduation till date.
- The department faculty consists of qualified and well experienced teachers, well trained in teaching and learning process.
- The department is located on the entire fourth floor of the college building and well spread over 1700 square meter area consisting of-
  - Spacious dissection hall with attached embalming facility and with all the dissection equipment.
  - Well equipped Histology practical hall with separate U.G. and P.G.Laboratories.
  - State of art museum with systematically arranged and catalogued specimens and models.
  - Department library with more than plenty of textbooks, reference books and journals and with internet facility.

# Department of Anatomy

- In addition to the M.B.B.S. and M.D. and M.Sc. Anatomy courses, the department caters to other courses like-
  - Fellowship in Pediatrics
  - Physiotherapy
  - B.Sc. Nursing
  - Audiology and Speech Language Pathology
  - Orthopedic
  - General Surgery

- Department conducts and supports National and State level workshops in-
  - Endoscopic sinus surgery
  - Neuro-spine cadaveric workshop
  - Temporal bone dissection workshops
- Best practices:
  - To fulfill the social commitment, the department has a 'voluntary body donation drive' programme that includes -
    - ✓ Talks on 'body donation' arranged in various 'senior citizen forums' in Pune city.
    - ✓ Write -ups in Local newspapers that have resulted into a large number of donated bodies received in the Department for educational purpose and added to the teaching material of the Department.
  - U.G. students are encouraged to participate in various conferences for
    - ✓ 'Model preparation competition',
    - ✓ national level 'Anatomy Quiz competition'.