

**BHARATI VIDYAPEETH DEEMED UNIVERSITY MEDICAL
COLLEGE, PUNE**

DEPT OF PATHOLOGY

1. Aim: To provide pathology education and services of the highest standards
2. Objectives: To
 - a) provide a nurturing learning environment for UG and PG students.
 - b) enable transformation of PG students to good pathologists and researchers
 - c) maintain excellent quality in laboratory work in support of hospital services
 - d) provide excellent infrastructure, equipment and faculty for research
3. The functions of the Department are as under:
 - a) Clinical division for providing expertise on diagnostic support to Bharati Hospital
 - b) Academic division for teaching and training for II MBBS undergraduate students, postgraduate students for MD & DCP and paramedical teaching for DMLT and B Sc Nursing programmes
 - c) Dept of Transfusion Medicine for the hospital and training in transfusion medicine and immunohaematology.
 - d) Research at departmental level for UGs and PGs and in collaboration with other college depts. and IRSHA.
4. The highlights of the Department are as under:
 - a) Use of modern innovative teaching technologies besides conventional teaching with Quizes, student seminars, OSPEs, Problem based learning, Interdepartmental Clinico pathological meetings, Subject seminars, Journal clubs and Group discussions & slide seminars. It has an active ward teacher counseling programme for underperforming students of MBBS to improve performance and learning.



UG PRACTICALS

- b) Well-stocked pathology museum with over 900 mounted and wet specimens for teaching purposes.

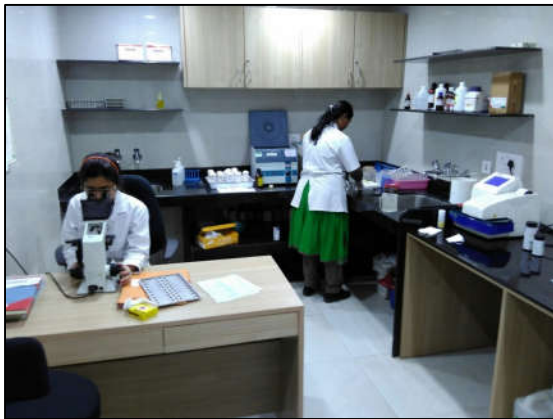


PATHOLOGY MUSEUM

- c) Adequate learning resources with monocular, binocular and multihead teaching microscopes with projection, LCD demonstrations for lectures & practicals, slides for histopathology, cytopathology & hematology, charts and Photographs and drawings. It provides internet resources in the departmental library.
- d) Active faculty Development Programme at MET workshops, CME programmes & guest lectures, conduct of periodic meetings of Pune Pathologists association and participation in state (MAPCON) and national (APCON) conferences.
- e) Round the clock laboratory services for patient care with a well-equipped advanced central laboratory.
- f) Active participation in screening camps for cancer, antenatal problems and blood disorders.
- g) Provision of modern equipment and infrastructure with automated haematology and coagulation analysers, ESR and urine analysers, cytocentrifuges and automation in histopathology.



HISTOPATHOLOGY GROSSING STATION



CLINICAL PATHOLOGY LAB



CRYOSTAT



AUTOMATION IN HAEMATOLOGY LAB



- h) Developed subspecialties in immunohistochemistry for diagnostic, prognostic and predictive markers, HPLC for haemoglobin studies, Flow cytometry for acute leukemias and CD4 - CD8 counts and Cytogenetics for Karyotyping and FISH. A molecular lab has been established for Acute leukemia, Thalassemia, Haemophilia carrier detection.



ADVANCED TECHNIQUES WITH GELDOC AND HPLC

5. The Deptt further participates in activities as under:
- a) Contributes to the National Tumour Registry of ICMR
 - b) Participates in EQAS programmes of Histopathology in AIIMS Delhi, Haematology of AIIMS Delhi and CMC Vellore and Cytology of Tata Memorial Hospital, Mumbai.
 - c) Periodically organizes guest lectures in the college for PG residents and under graduate students.
 - d) PG Residents present papers at National/State conferences and also attend CME programmes and workshops in Autopsy and surgical pathology at various National Institutions.
 - e) Organizes the Dr. KD Niphadkar CME programme in Pathology annually and conducts Quarterly Meeting of Pune Association of Practicing Pathologists.
 - f) Organized the 41st National Conference of the ISBTI and CME on Histopathology and Haematology in 2016.
 - g) Faculty are life members of parent professional bodies such as IMA, IAPM, ISHTM, ISBTI, IAP (Indian Division), IAC and Electron Microscopic Society of India and IAPP. They are also member of Board of Studies in pathology in various institutes and are recognized NABL and NABH assessors.